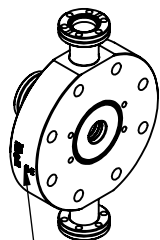
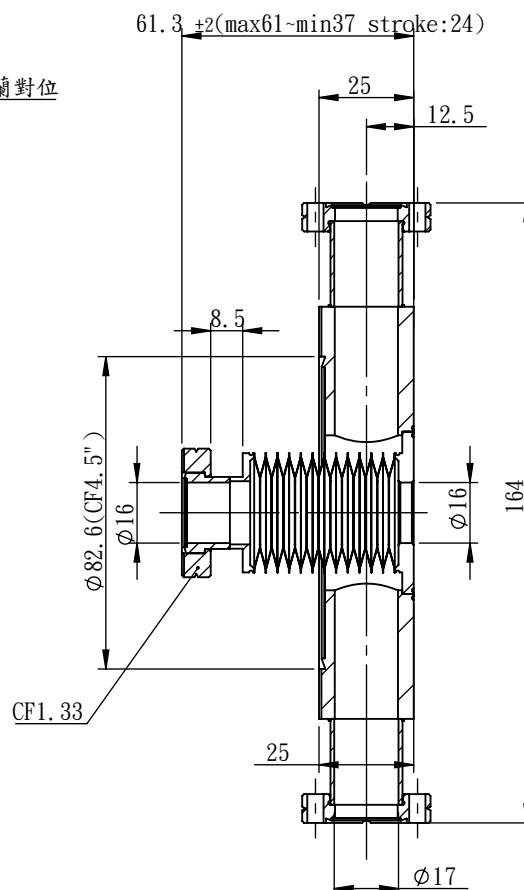
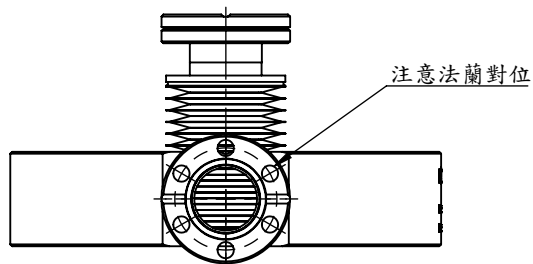
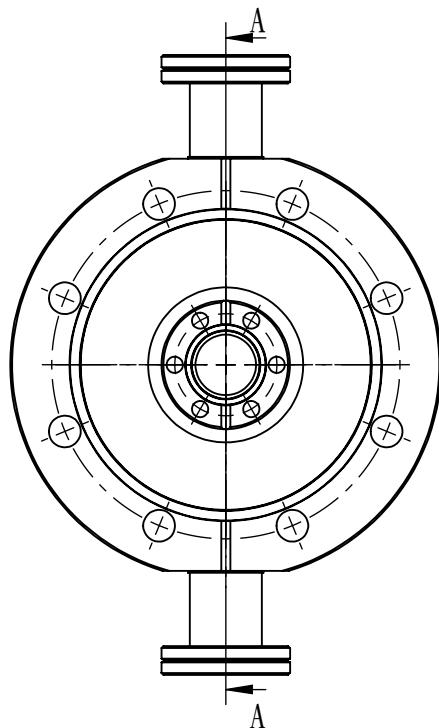
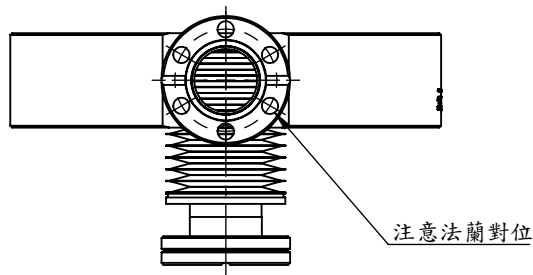


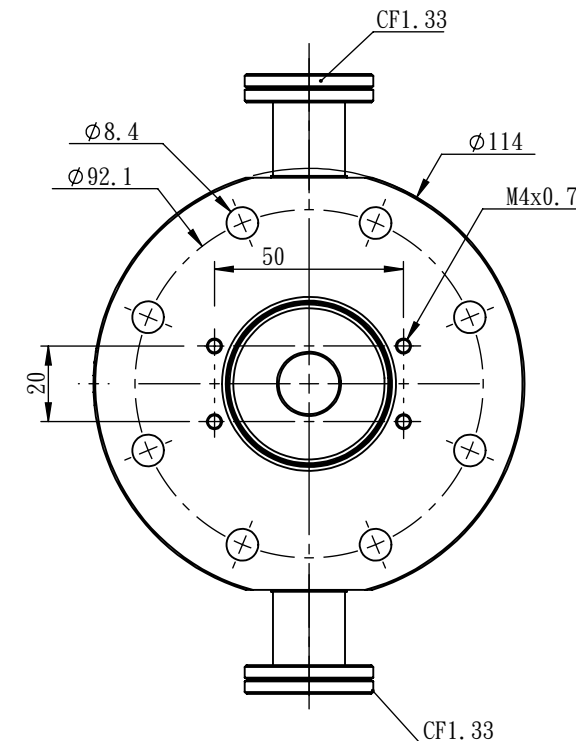
3	Revision				
	ITEM	ZONE	DESCRIPTION	DATE	APPEOVED
	①				
	②				



雷刻位置：
P/N:(產品料號)
S/N:(產品序號)




剖面圖 A-A



NOTE :

- 1.Weight:1679gw
- 2.表面處理:超音波洗淨烘乾,不得刮傷
- 3.氦氣測漏: $\leq 2 \times 10^{-10}$ mbar.l/s-He
- 4.壽命:一百萬次

Unit : mm			
ANGLE	±0.5°		
0.XXX	±0.005	APPROVALS	DATE
0.XX	±0.05	APPROV	
0.x	±0.1	CHECK	
0.	±0.5	DESIG	Chi Hsin 2026-04-24
SCALE: 1:2		DRAW	Chi Hsin 2026-04-24

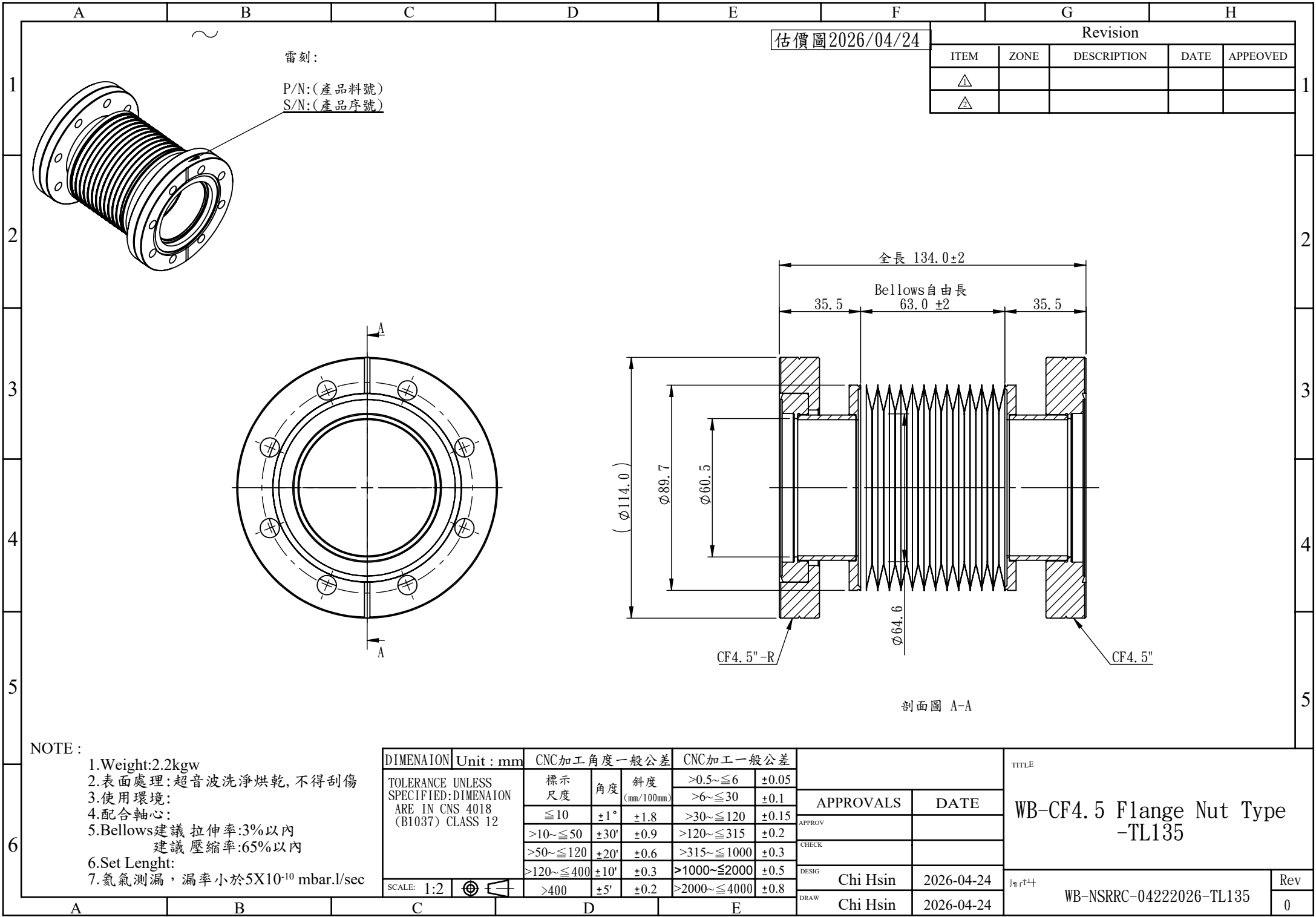
TITLE

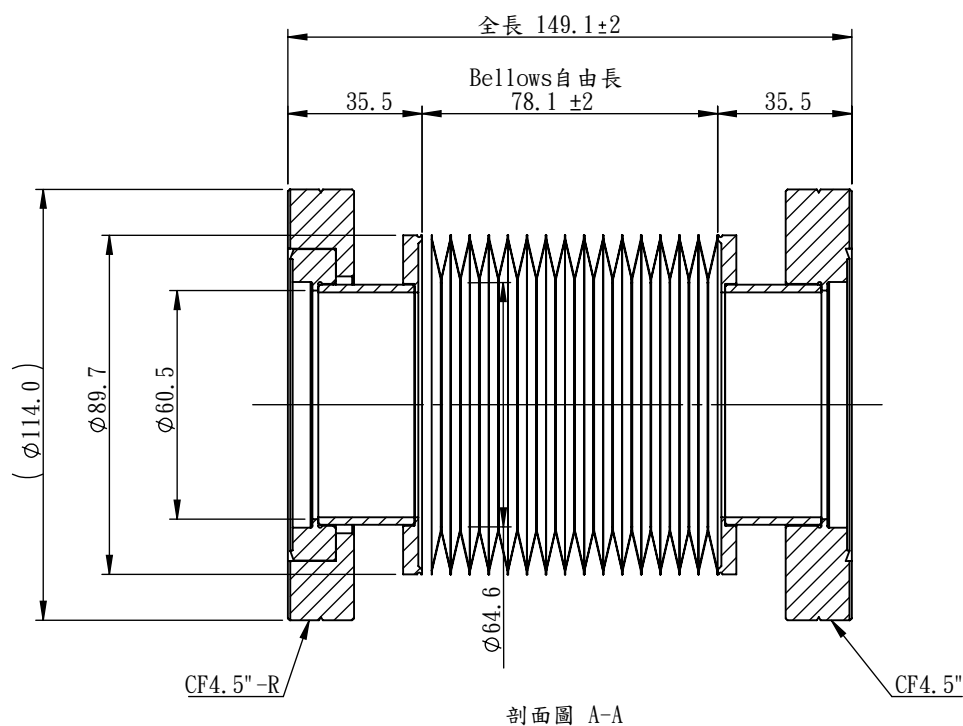
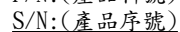
1944

WB-NSRRC-067E-S24

Rev

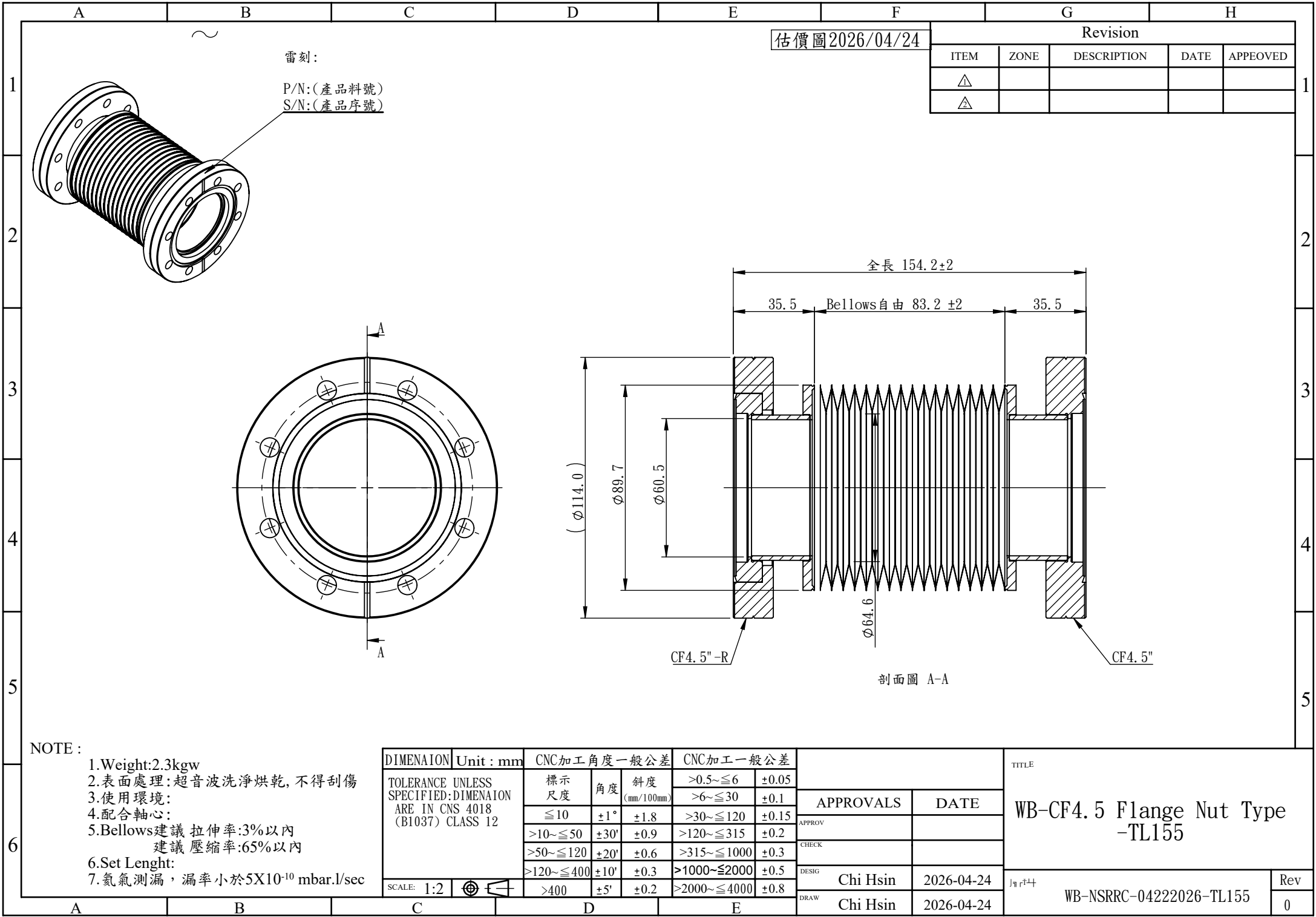
0

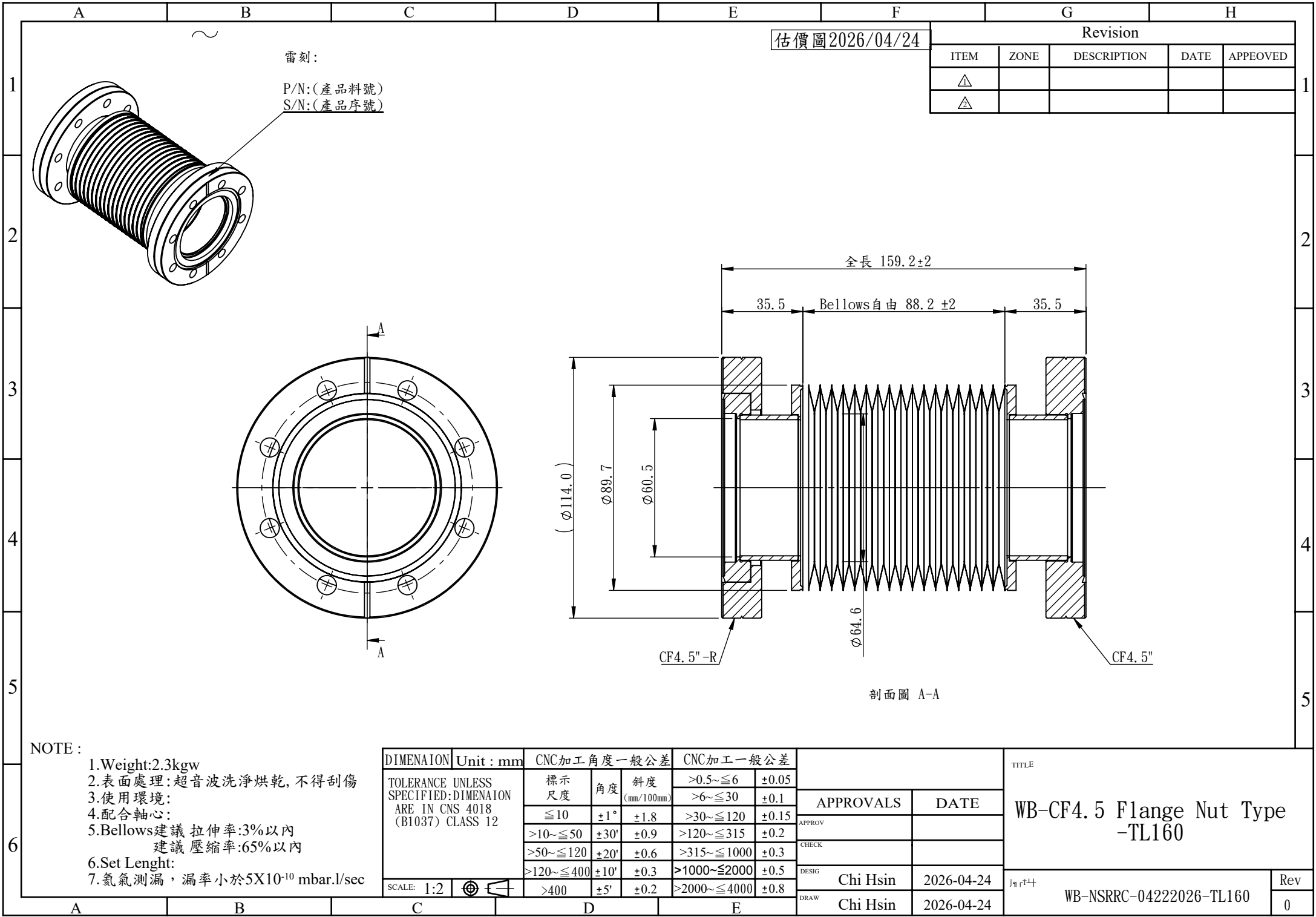


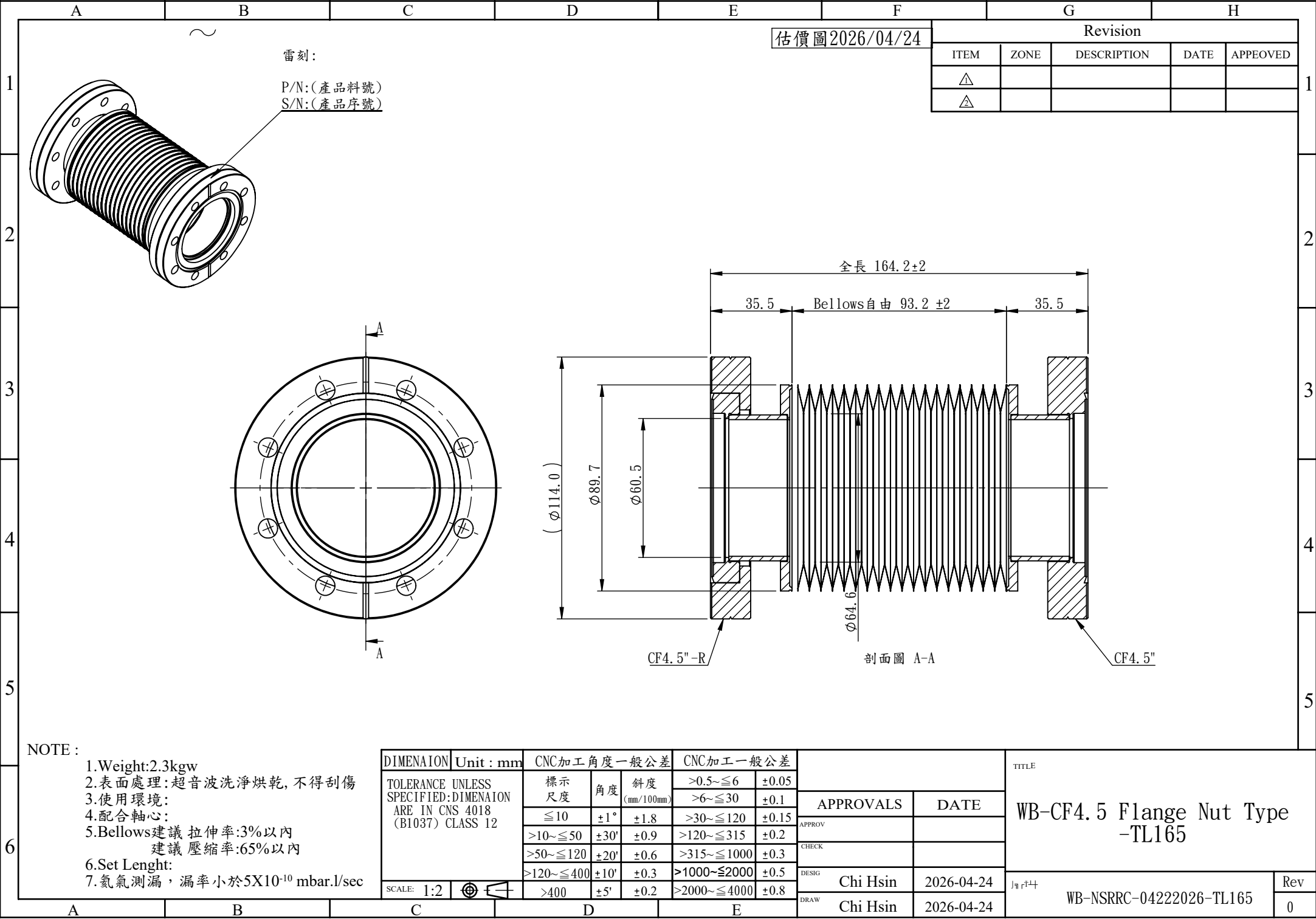


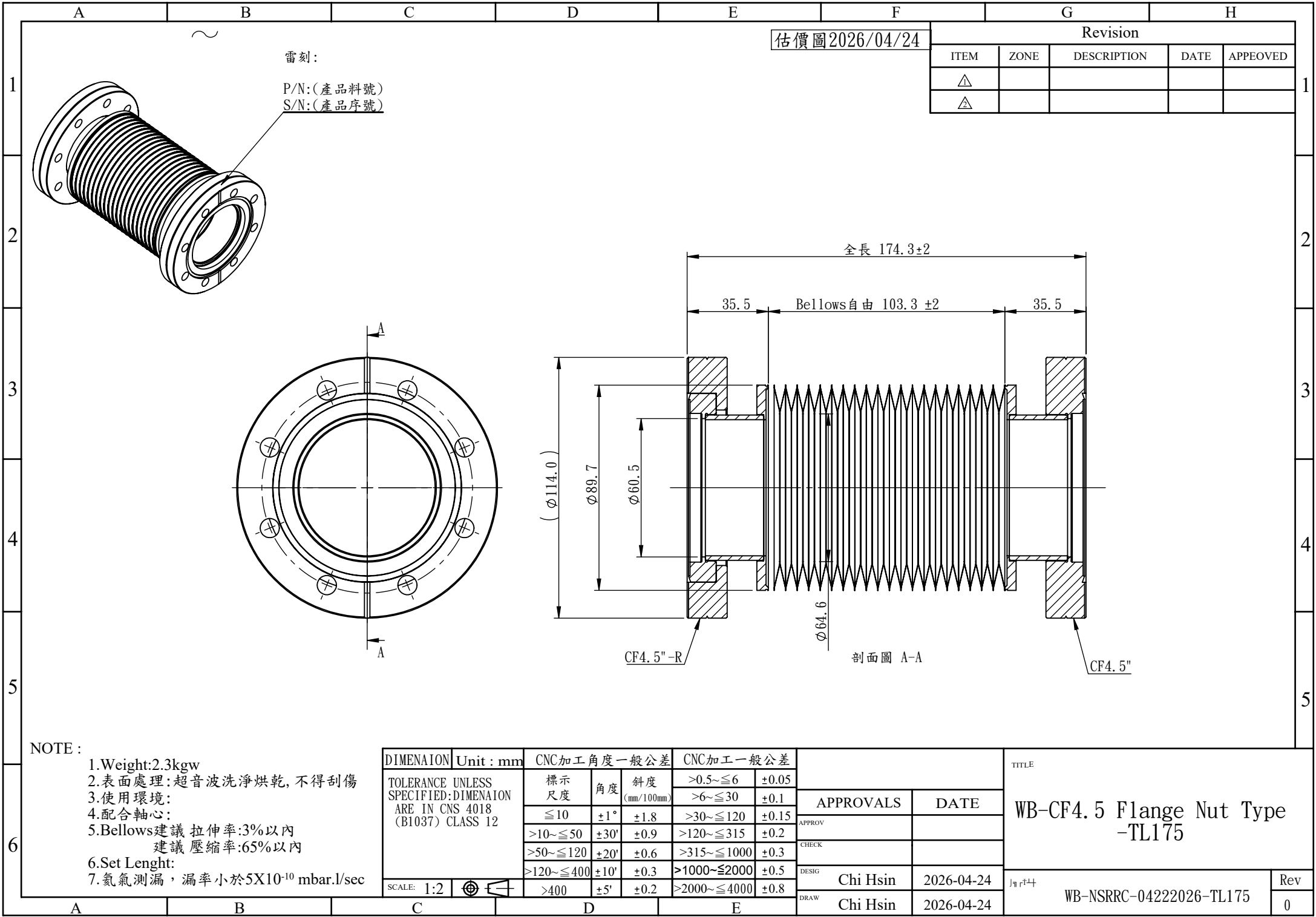
- 1.Weight:2.3kgw
- 2.表面處理:超音波洗淨烘乾,不得刮傷
- 3.使用環境:
- 4.配合軸心:
- 5.Bellows建議 拉伸率:3%以內
建議 壓縮率:65%以內
- 6.Set Length:
- 7.氦氣測漏, 漏率小於 5×10^{-10} mbar.l/sec

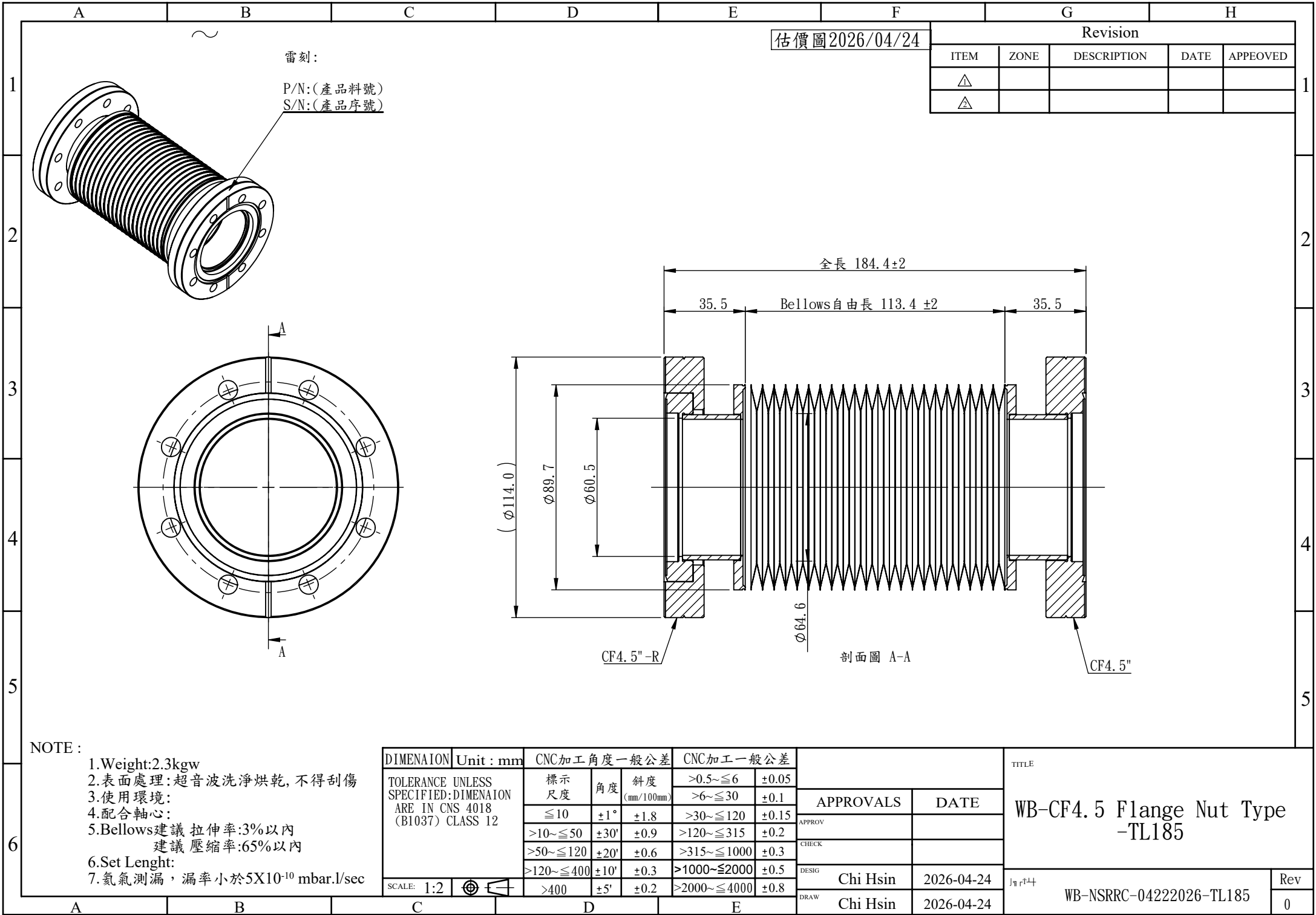
DIMENAIION	Unit : mm	CNC加工角度一般公差			CNC加工一般公差			TITLE WB-CF4.5 Flange Nut Type -TL150			
TOLERANCE UNLESS SPECIFIED: DIMENAIION ARE IN CNS 4018 (B1037) CLASS 12	<div>標高 尺度</div> <div>≤10</div> <div>>10~≤50</div> <div>>50~≤120</div> <div>>120~≤400</div>	<div>角度</div> <div>±1°</div> <div>±30'</div> <div>±20'</div> <div>±10'</div>	<div>斜度 (mm/100mm)</div> <div>±1.8</div> <div>±0.9</div> <div>±0.6</div> <div>±0.3</div>	<div>>0.5~≤6</div> <div>>6~≤30</div> <div>>30~≤120</div> <div>>120~≤315</div> <div>>315~≤1000</div> <div>>1000~≤2000</div> <div>>2000~≤4000</div>	<div>±0.05</div> <div>±0.1</div> <div>±0.15</div> <div>±0.2</div> <div>±0.3</div> <div>±0.5</div> <div>±0.8</div>	APPROVALS				DATE	
						APPROV					
						CHECK					
						DESIG				Chi Hsin	2026-04-24
						DRAW				Chi Hsin	2026-04-24
SCALE: 1:2		>400	±5'	±0.2	>2000~≤4000	±0.8	Part WB-NSRRC-04222026-TL150			Rev 0	
C		D		E							

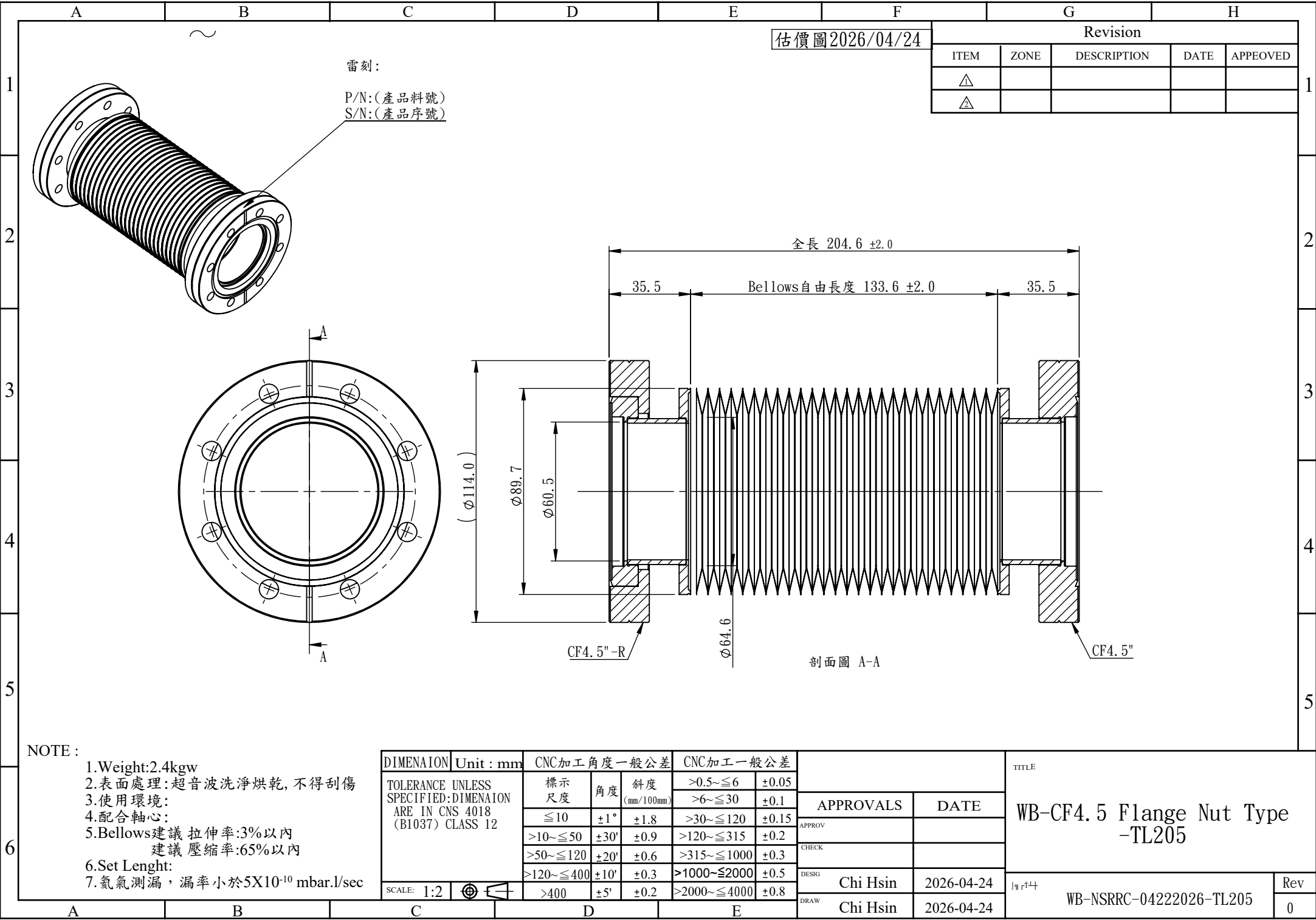


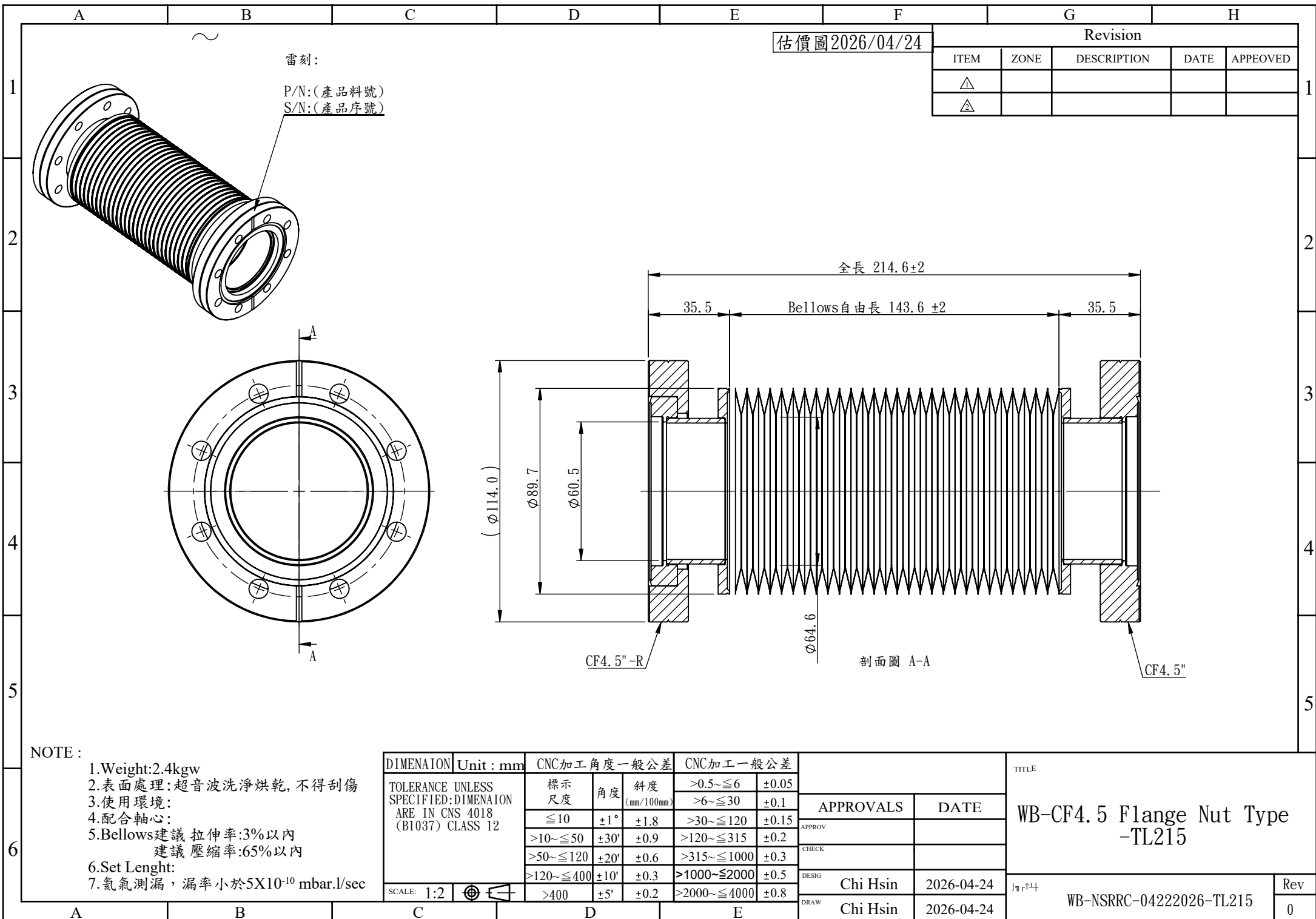












NOTE :

1.Weight:2.4kgw

2.表面處理:超音波洗淨烘乾,不得刮傷

3.使用環境:

4.配合軸心:

5.Bellows建議 拉伸率:3%以內

建議 壓縮率:65%以內

6.Set Lenght:

7.氮氣測漏,漏率小於5X10⁻¹⁰ mbar.l/sec

